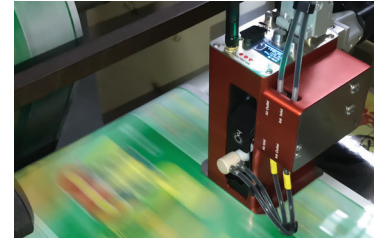


# Hx Ultra Fully-automated Solvent Bulk Ink Thermal Inkjet Printer

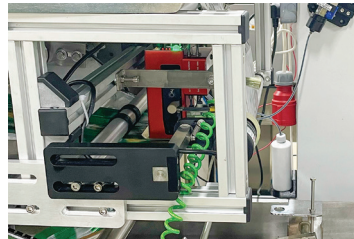
 **Wi Fi Connectivity**



Hx Ultra on VFFS Line



Hx Ultra on Winder rewinder



Hx Ultra on HFFS Line



Hx Ultra on HFFS Line

**Efficient coding,  
smarter savings.  
Upgrade to our bulk  
ink delivery system.**  
Ideal solution for  
medium to high-volume  
production lines



## Low Cost of Print and Total Cost of Ownership (TCO)

The bulk ink system revolutionizes high-volume production by delivering a more efficient and cost-effective solution, reducing not only printing costs but also total ownership costs compared to other technologies.



## Maintenance-free

Equipped with a bulk ink system that offers reliable and maintenance-free coding solution reducing the need for frequent cartridge change. It has reliable software that is designed to minimize the need for manual intervention.



## Ease of Use & Clean

Despite its advanced technology, low-skilled workers can operate the printer with no intensive training required. Its compact design offers no messy ink drops in the production floor ideal for hygienically demanding food production line



## Easy Integration

Its small footprint design allows seamless integration to various packaging lines.

**Call for demo  
+91 920 584 9888**

# SPECIFICATIONS

## CONTROLLER

DISPLAY	Optional Tablet 10" with Anti-theft Lock
MESSAGE DESIGN	1) Web-based Message Editor 2) Vanguard Create: Windows-based Message Design Software
MESSAGE CAPACITY	Unlimited (within Tablet/Windows)
START & STOP TIME	Immediate
PASSWORD PROTECTION	Yes
ALARM	Built in beacon, 128*64 pixel OLED, Buzzer
NUMBER OF PRINTHEAD	1
SYSTEM LANGUAGE	German, France Japanese, Portuguese, Spanish, Thai, Turkish, Hindi, Arabic, Mandarin (other languages upon request)
PRODUCT CERTIFICATION	CE
WARRANTY	12-month limited warranty (Terms & conditions apply)

## CONNECTIONS & INTEGRATION

CONNECTIVITY	Easy connectivity based on customer needs: Wi Fi (Direct and Access Point connections)  Isolated RS232 (optional) USB Cable
POWER SUPPLY	110 to 220 VAC
ENCODER	Optional
TWO OR THREE COLOR EXTERNAL BEACON	Optional
EXTERNAL SENSOR	Yes
MOUNTING & STAND	T-bracket mounting, Tripod Stand, or Slider mounting

## INK SOLUTION

TECHNOLOGY	Funai Cartridge Technology
INK TYPE	Porous & non-porous ink
COLOUR	Black (solvent-based & semi-solvent ink)
CARTRIDGE DIMENSION	60mm x 74mm x 25.5mm
THROW DISTANCE	Hx Ultra-HR 600dpi up to 4mm Hx Ultra-HT 300dpi up to 10mm

## PRINTING FEATURES

RESOLUTION	Hx Ultra-HR 600dpi Hx Ultra-HT 300dpi
MAXIMUM PRINT SPEED	120 m/min (160 dpi)
LOGO PRINTING OPTION	Yes
BARCODE PRINTING	All types of barcodes
NUMBER OF PRINT LINES	up to 6 (2mm each line)
FONTS	All Windows Fonts
HEIGHT RANGE OF PRINTABLE CHARACTERS	up to 12.7mm (~0.5")
DATE FORMAT	Variety of date format
COUNTERS	Print, message, and user-defined counter available
MESSAGE COMPONENTS	Text   Date   Time   Logo   Counter   Shift   Barcode   External Data   Lot Number   Alphanumeric

## PHYSICAL SPECIFICATIONS

HOUSING MATERIALS	Coloured Anodized Aluminum & Stainless Steel
CONTROLLER WEIGHT	1050gm
DIMENSION	146 mm x 90 mm x 84 mm
ENVIRONMENTAL CONDITIONS	Temperature 0-50°C, Humidity 0-80% (special casing for humid environment)

## ADVANCED FEATURES

AUTO NOTIFY	Events such as 'low ink level', 'printing completed', and 'online data received' can be automatically communicated by choosing selected channels e.g. USB, RS232, and Wi Fi (HTTP)
AUTO PILOT	Allows other external device to control and monitor Hx Printer. Any third party device (e.g. PLC), system, or software can send a command to Hx Printer
DAILY PRODUCTION REPORT	Provides an hourly print report of the printer giving an overview of the complete daily production
ECONOMY MODE	Reduces ink consumption to up to 50% increasing print quantity
EXTERNAL DATA	Easy integration to external devices e.g. PLC, weighing scale, etc for printing variable data. Auto calculation and printing of the product weight
FIELD UPGRADE	Allows the printer's software to be upgraded remotely
INK ESTIMATION CALCULATOR	Provides an estimate number of prints per cartridge based on the message and other parameters
PRINTER HEALTH CHECK	Detects warning/s to avoid future or unwanted downtime
ROLLOVER TIME	Easily customise time and date as to company's required production time or work shift

For more information,  
please visit our website:

[www.maplejet.com](http://www.maplejet.com)

T | +91 120 0438 8841  
E | sales@maplejet-india.com  
E-73, Sector 63, Noida,  
Uttar Pradesh, India



Scan to learn more  
about Hx Ultra