



**BONDING  
TOGETHER**



# **SHREE LAMIPACK PVT. LTD.**

- ❖ **Self Adhesive Ribbons**
- ❖ **Self Adhesive Tapes**
- ❖ **Adhesive Die Cuts**
- ❖ **Printers, Scanners & Automation**
- ❖ **RFID Labels**
- ❖ **Poly Carbonate/Vinyl/Dome Labels**
- ❖ **Multi Colour Labels**
- ❖ **Security Labels**
- ❖ **Self Adhesive Paper & Films**
- ❖ **Thermal Transfer Ribbons**
- ❖ **Office Stationery**



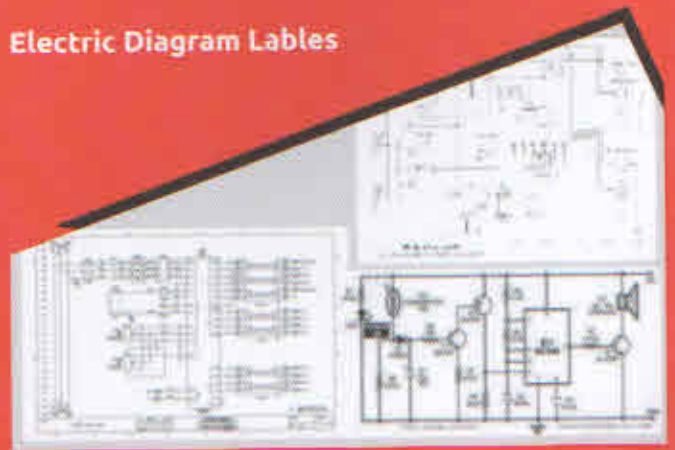


# SELF ADHESIVE LABELS / STICKERS

## Product Labels



## Electric Diagram Labels



## Multi Colour Labels



## Barcode Labels



## Polycarbonate / Vinyl Labels



## Information Labels



## Dome Labels



## Film Labels





### Security Labels



### Labels with Hologram Strip



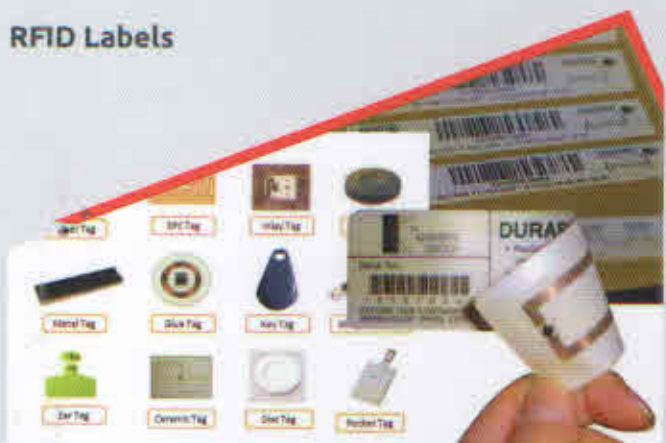
### Track & Trace Labels



### Scratch Labels



### RFID Labels



### Sequential / Price Marking Labels



## MULTICOLOR LABELS WITH FOILING

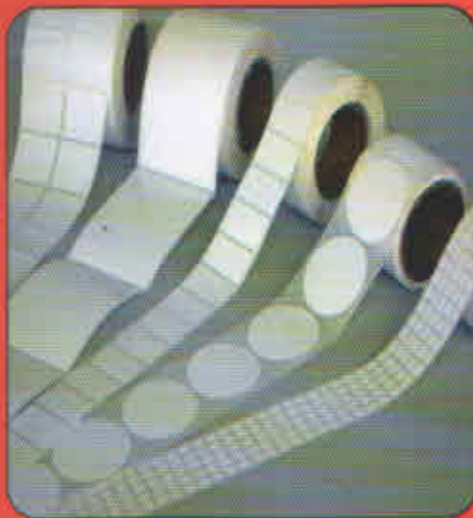




## SELF ADHESIVE BARCODE LABELS, TAGS, COMPUTER LABELS



Plain Labels



Plain Shape Labels



Partly Gummed labels



Computer Labels  
(Roll / Sheet)

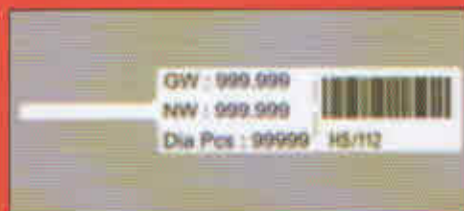
## BARCODE LABELS (TAGS) PLAIN/ PRINTED



## Non Tearable Tags & Temper Evident Label



## JEWELRY BARCODE LABELS



## APPLICATION SOFTWARE

- ❖ Attendance Software with Biometric machine/ Barcoding
- ❖ Customized Barcode Software Solution(Desktop/ Web)
- ❖ Billing Software with Inventory Control
- ❖ Billing Software Without Inventory
- ❖ Customized Android Apps with Barcoding Solution
- ❖ Integration with Barcode Printer



# SELF ADHESIVE TAPES



Nylon/Ryan/  
Polyester Cloth tape



Masking Tape  
(General Purpose)



Double Coated  
Cloth Tape



Cross / Mono  
Filament Tape



Aluminium Foil Tape



Kraft Paper tape



Floor Marking Tape



Gasket Foam Tape



Double Coated  
Tissue tape



Cloth Cotton  
Duct Tape



Double Coated  
Foam Tape



Double Coated  
Polyester Tape



Fine Line  
Masking tape



Wire Harness  
Electrical Tape



Kapton/Teflon Tape/  
Polyimide Tape



Masking Tape  
(High Temperature)



Acrylic Foam Tape  
(GHP)



Special Surface Protection Film for Plastic Parts



Auto Wrap White Films



BOPP Tape Plain / Coloured / Printed Tape



## SELF ADHESIVE DIE CUT PROFILE

Paint Masking Die - Cut Profile  
Double Side Tissue Die - Cut Profile  
Double Side Polyester Die - Cut Profile  
Surface Protection Die - Cut Profile  
Aluminium Foil Die - Cut Profile  
Double Sided Adhesive Die - Cut Profile  
Ultra Destructible Vinyl Die Cut  
Self- Adhesive Foam Die cut of PU / EVA / PE /  
XPE / EPDM / Nitrile Rubber Etc.  
Self- Adhesive Foam Die Cut of Double Coated  
Polyester (High Adhesive)  
Self Adhesive Foam Die - Cut Profile(2mm to 3mm thick)



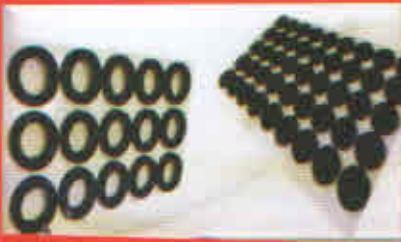
Double Side Tissue  
Die Cut



Partly Adhesive  
Tyvek Cover



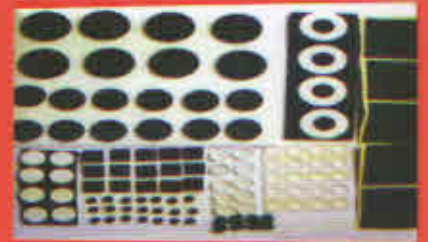
Paint Masking Die  
Cut Profile



Self- Adhesive Foam  
Die cut



Tyvek Hole Closing  
Die Cut



Self- Adhesive Foam  
Die cut of PU / EVA / PE /



Surface Protection  
Die Cut



Double Coated Polyester  
Die Cut



Polyester (High Adhesive)  
Die Cut



Aluminium Foil  
Die Cut



Double Side Adhesive  
Die cut



Ultra Destructible Vinyl  
Die Cut

## PRINTERS



Desktop Printer



Industrial Printer



Mobile Printer



Card Printer



RFID Printer



Receipt Printer

## SCANNERS



Barcode Scanners



Bluetooth Barcode Scanners.



Hands-free Scanners



Fixed Mount Barcode Scanners



Hand Held Scanner (Mobile Scanner)

All Scanners Available 1D, 2D and CCD Barcode Scanners

## HAND LABELERS



Blitz



Open Data



Jolly

Hand Labelers Available In :  
Single Line (8 to 10 Digit)  
Double Line (16 to 20 Digit)  
Triple Line (40 to 42 Digit)  
Sequential Numbering (2253)



## LABELS REWINDER / UNWINDER



## HAND LABELS APPLICATORS & ONLINE APPLICATOR WITH CONVEYER



## EAS SECURITY SYSTEM & ITS RELATED EQUIPMENTS



EAS Security Gate



Deactivator



Security Tag Detacher



Hard Tag With Pins, Soft Tag

## RFID SYSTEM



Reader/Writer



RFID Labels



RFID Antenna



Inlay



## SELF ADHESIVE LABEL STOCK

### SELF ADHESIVE PAPER

- **SAP 1100 - Chromo Label Stock**  
75-78 GSM Chromo + 20 GSM AA + 60 GSM WGLS
- **SAP 1150 - Chromo Label Stock (Pharma Grade)**  
70 GSM Chromo + 20 GSM AA + 60 GSM WGLS
- **SAP 1200 - Piggy Back Chromo Label Stock (Double Release)**  
75-78 GSM Chromo + 20 GSM AA + 60 GSM WGLS + 20 GSM AA + 60 GSM WGLS
- **SAP 1220 - Silver Chromo Label Stock**  
78 GSM Silver Chromo + 22 GSM AA + 60GSM WGLS
- **SAP 1250 - Silver Back Chromo Label Stock**  
Silver Back Chromo + 22 GSM AA + 60GSM WGLS
- **SAP 1400 - Mirror Coat (High Gloss) Label Stock**  
75 GSM High Gloss Paper + 20 GSM AA + 60 GSM WGLS
- **SAP 1500 - Maplitho Label Stock**  
70 GSM Century Maplitho + 20 GSM AA + 65 GSM CCK
- **SAP 1550 - Maplitho Label Stock For A-4 Sheets**  
70 GSM Century Maplitho + 20 GSM AA + 75 GSM CCK (Lay Flat)
- **SAP 1600 - Fluorescent Label Stock**  
70 GSM Fluorescent + 20 GSM AA + 67 GSM CCK
- **SAP 1700 - Thermal Transfer Paper Label Stock**  
70 GSM TT +20GSM AA + 60GSM WGLS
- **SAP 1800 - Direct Thermal Superior Paper Label Stock**  
74 GSM top Coated Thermal + 20GSM AA + 60 GSM WGLS





## SELF ADHESIVE FILM

- **SAF 2200 - White PP**  
61 Micron White Cavitated Top Coated, Print Receptive Film + 20GSM AA + 60 GSM WGLS
- **SAF 2220 - White Pearl**  
51 Micron PPHS White Top Coated Print Receptive Film + 20GSM AA + 60 GSM WGLS
- **SAF 2240 - Clear PP**  
51 Micron Clear PP Top Coated Print Receptive Film + 20GSM AA + 60 GSM WGLS
- **SAF 2260 - Silver PP**  
51 Micron Top Coated Silver Metallised Print Receptive Film + 20GSM AA + 60 GSM WGLS
- **SAF 3300 - White Polyester**  
51 Micron White Polyester Top Coated Print Receptive Film + 20GSM AA + 60 GSM WGLS
- **SAF 3320 - Clear Polyester**  
51 Micron Clear Polyester Top Coated Print Receptive Film + 20GSM AA + 60 GSM WGLS
- **SAF 3340 - Matt Silver Metalized Polyester**  
51 Micron Print Receptive Matt Silver Metalized Polyester Film + 20GSM AA + 60 GSM WGLS
- **SAF 4400 - White Matt Film TT Non-Tearable**  
80 Micron Imported Synthetic Print Receptive Film + 20GSM AA + 60 GSM WGLS
- **SAF 4450 - White Matt Film Temper Evident (TTE)**  
80 Micron Imported Temper Evident Print Receptive Film + 20GSM AA + 60 GSM WGLS



## SELF ADHESIVE FABRIC

- **SAC 501 - Nylon Taffeta Cloth Self Adhesive**  
Nylon Taffeta Cloth + 20GSM AA + 60 GSM WGLS
- **SAC 401 - Polyester Satin Cloth Self Adhesive**  
Polyester Satin Cloth + 20GSM AA + 60 GSM WGLS
- **SAC 301 - Tyvek Self Adhesive**  
140 ~ 170 Micron Tyvek + 20GSM AA + 60 GSM WGLS
- **SAV 601 - Coloured Vinyl Self Adhesive (Printable)**  
125 Micron Coloured Vinyl + Special Adhesive + 100 GSM Release Paper

Available Colour: White, Lemon Yellow, Golden Yellow, Green, Red, Orange, Blue, Black



## NON ADHESIVE TAG BOARD

- **TB 0050 Non Adhesive Both Side Coated Tag Board**  
230 GSM White Gloss Printable
- **TBS 0060 Non Adhesive Top Coated Non-Tearable Synthetic Tag Board**  
130 GSM White Printable
- **TBS 0070 Non Adhesive Top Coated Non-Tearable Synthetic Tag Board**  
230 GSM White Printable
- **TBS 0080 Tyvek Non Adhesive Non-Tearable Tag Board**  
220 ~ 320 Micron White Printable



## RELEASE LINERS

Solvent Less Platinum Coated Release paper, Upto 1600mm Width

Available Varieties :-

- Glassine
- CCK

Available Thickness :-

- 60 GSM ~ 67 GSM
- 80 GSM ~ 85 GSM
- 90 GSM
- 100 GSM ~ 130 GSM

Available Types:-

- Plain/Printed
- Single Side Coated
- Double Side Coated

Various Coatings for Specific Uses like Holograms, Tapes (Single Side & Double Side), Medical Grade, Label Stock, Die Cuts, Graphics etc.



## THERMAL ROLLS

- Jumbo Rolls from 48 to 130 gsm
- Slitted Rolls in all Sizes / Cores / Lengths
- Printed One Side / Both Side upto 5-6 Colour
- Special Width / Length also available



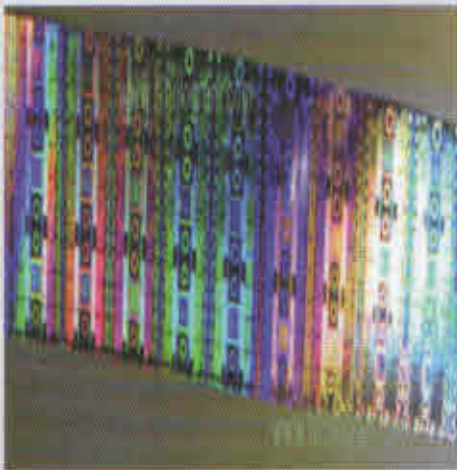
## THERMAL TRANSFER RIBBONS

- Wax Standard – SW – 111
- Wax Premium – SW – 112
- Wax Special – SW – 113
- Wax Resin Standard – SWR – 221
- Wax Resin Premium – SWR – 222
- Wax Resin Special (NK22) – SWR – 223
- Resin Standard – SR - 331
- Resin Premium – SR – 332
- Resin Special (NK45) – SR – 333
- Wash Care Special – SRWC -431
- Wax Resin Special for Near Edge – SWRNE – 224
- Resin Special for Near Edge – SRNE – 334
- Ribbon For TTO – Wax Resin Special – SWRTTO – 225
- Ribbon For TTO Resin Special – SRTTO – 335



## HOLOGRAPHIC FOIL

Narrow Web Registered Design in 2D/3D/Dot Matrix for use as cold Foil and Hot Foil



## LAMINATION TAPES

With Liner / Without Liner/ Ultra Clear / Non Adhesive etc. - cut to size for specific use.





## SOME OF OUR VALUABLE CUSTOMERS



## OUR PRODUCT ALSO AVAILABLE AT



## OUR VALUABLE SUPPLIERS



BONDING TOGETHER

# SHREE LAMIPACK PVT. LTD.

Corp. Office : Nisha House, 104, Navyug Market, Ghaziabad-201 001 (U.P.) INDIA  
 Works : D-2, Meerut Road Industrial Area, Near Hamdard Factory, Ghaziabad-201 003 (U.P.)

Ph. : 0120-279 8904, 7601, 3578 | Mob. : +91-9810062637, 7838395004

E-mail : sales@shreelamipack.com / shipra.tech@gmail.com