

Coolant UnionPop-Off™
(With Bearing) (903 Series)

- 15000 rpm/ 70 bar/ 82 lpm
- Unlimited dry running without media pressure
- Enhanced Design



Coolant UnionPop-Off™
(With Bearing) (1109 Series)

- 20000 rpm/ 140 bar/ 82 lpm
- Angular contact bearings
- Longer life
- Unlimited dry running without media pressure



Coolant Union
(With Bearing) (1116 / 1101 Series)

- 20000 rpm/ 150 bar/ 82 lpm
- Continuous coolant service with closed seals
- Labyrinth system and large vents to protect ball bearing



Coolant Union
(Bearingless) (1121 / 1151 / 1154 Series)

- 50000 rpm/ 210 bar/ 82 lpm
- Closed seals as well as POP-OFF™ & MICRO POP-OFF™ technology for unlimited dry running
- Compact size for customized installation



Air-Hydraulic 2 Passage Union
(2620 Series)

- 12000 rpm/ 140 bar/ 69 lpm
- Two independent passages
- Double Precision Ball Bearings for smooth operation



Multi Passage Union

- Upto Ten passages for various media with independent channels
- Special sealing technology for low/ high temperature application and longer life



Coolant UnionAuto Sense™
(1114 Series)

- 35000 rpm/ 140 bar/ 82 lpm
- AUTO SENSE™ technology which automatically senses media, i.e. coolant, MQL or pressurized dry air and allows continuous operation under any condition
- Compatible for OTT/ BERG Drawbars



SpindleShield™ Union with Alert system

- Patented SpindleShield system reliably prevents expensive spindle failures by issuing warning to machine of leakage due to excessive seal wear
- Rotor mounted, Bore mounted & Bearingless options



Threaded / Flanged Union

(57 Series)

- Standard and special seals for high temperature and abrasive media



2 1/2" / 3" Union For Water

(755 / 857 series)

- Easy replacement of wear parts
- Balanced mechanical seals
- Service Kits available



Tyre Building Machine Application



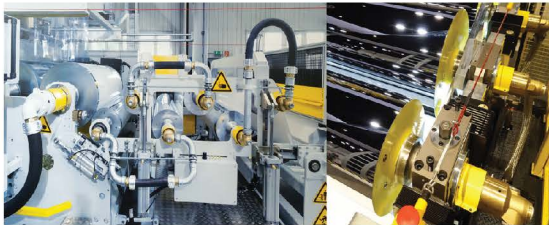
6000 Series For Water Cooling

- Robust design
- Cartridge type seals for easy maintenance



PLASTIC & POLY FILMS

Plastic Sheets & Film Lines



GENERAL ENGINEERING

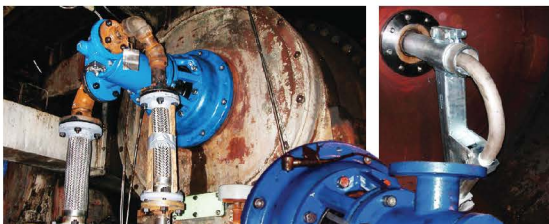
Swivel Joints

- Handles 360 degree single and multi-plane swivel movement with positive sealing
- Prevents hose pipe premature failures thus saving expensive hose pipes



PAPER & PRINTING

FSU Union with Siphon System at Dryer



- High speed and high pressure application
- Stationary siphon
- For closed gear machines

TEXTILE INDUSTRY

Singeing Application



Steam & Hot Oil

- (BARCO) High Temperature & High Pressure
- Widely spaced bearings
- With External Seal Wear indicator



CCM Union
(With Hose)

- Monoflow & Duoflow design
- Full Media flow
- Very long life
- Balanced mechanical seals



CCM Union
(Hoseless)

- Monoflow & Duoflow design
- Balanced mechanical seals
- Longer life due to elimination of side load
- Repetitive Hose consumption eliminated



Roller Table Threaded Union

- Rotary Union with special seal technology for high temperature applications
- Resists water hammering



Hot Coiler Around-The-Shaft Union

- For clamping and unclamping application in coil winders
- Often used in the tandem with grease unions



Other Industry Application areas: • ALUMINIUM • PETROCHEMICAL • GLASS • FOOD • WIND ENERGY • HYDRO POWER



CORPORATE OFFICE

MACO CORPORATION (INDIA) PVT. LTD.
2/5 Sarat Bose Road, Kolkata - 700 020, India
E: rduutta@macocorporation.com
E: info@macocorporation.com
M: +91 93318 40626
P: +91-33-4084 4100

